

Master of Education

EDUCATIONAL LEADERSHIP AND MANAGEMENT

School Principal Supervisor/Director

Program Objectives

The Master of Education in Educational Leadership and Management Program prepares the candidate to meet the new Massachusetts Professional Standards and Indicators for Administrative Leadership as either a Supervisor/Director (P-12) or School Principal (P-6, 5-8, 9-12). The program offers courses and field experiences that equip school administrators with the skills and competencies necessary for becoming effective educational leaders.

About the Program

This program is an interdepartmental program. Within this spirit, relationships between faculty members in education departments and other programs across the university have been allied.

Program Description

The MEd program in Educational Leadership and Management is designed for candidates with the desire to:

- Develop competencies in managerial skills related to political arenas, personnel, fiscal affairs, acquisition of material resources, diverse publics and pupil populations, and organizational change
- Strengthen, deepen and expand the knowledge base in the field of leadership and management in order to anticipate and to solve current and future problems inherent in the educational system
- Demonstrate through course work and field-based experiences the knowledge, skills and dispositions that are required to lead and manage an educational enterprise effectively and efficiently

The University offers preparation for two Massachusetts Licenses

Principal Licensure (PreK-6, 5-8, 9-12) — 42 graduate credits
Supervisor/Director-Licensure (PreK-12) — 39 graduate credits

There are two initial licensure options in this program.

There is one option for students who wish to seek school principal licensure and a second option for students who

wish to supervise or direct programs in a school system.

Successful completion of the degree and all requisite licensure requirements qualifies degree recipients for endorsement as a principal or supervisor/director.

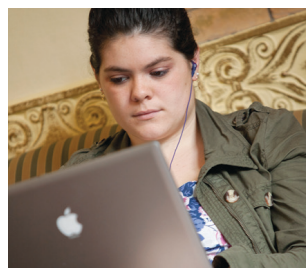
Program Requirements

A minimum of 39-42 graduate credits is required to complete the MEd program as well as to prepare for application for one of the two initial licenses: principal license (Option A) and supervisor/director (Option B).

Both programs consist of:

- A core of tightly-focused and comprehensive courses;
- Field Work that encompasses pre-practicum and practicum experiences. These experiences are designed to develop the knowledge, skills, and dispositions of effective administrators, ready and able to positively lead schools and improve student learning.
- Pre-practicum experiences integrated into course content. Candidates have opportunities to apply course content in a practical way in the field.
- Two practicum courses (100 practicum hours for each). Occurring near the end of the program and before the practicum, these courses deepen candidate knowledge and skills in discrete areas of the effective administrator (collegial supervision and planned change)
- The practicum consists of 300 hours (principal) or 100 hours (supervisor/director). Candidates apply the knowledge and skills acquired in course work under the guidance of a supervising administrator and university supervisor.

In addition to our School Principal and Supervisor/Director tracks, we also offer an M.Ed. in Educational Leadership and Management: Technology Leader



Program of Study

Option A—School Principal (PreK-6, 5-8, 9-12) Licensure

Required Courses

EDLM 9005	Dynamic Perspectives in Education (5-hour field experience).....	3 S.H.
EDLM 8XXX	Principles for Success for Effective Administrators (20-hour field experience).....	3 S.H.
EDLM 8XXX	Data Informed Decision Making for School Improvement and Student Learning (20-hour field experience).....	3 S.H.
EDLM 8050	Seminar: Research in Educational Leadership	3 S.H.
EDLM 8XXX	Family and Community Engagement (15-hour field experience)	3 S.H.
EDLM 8XXX	Public School Finance, Human Resources, and Personnel Administration (10-hour field experience)	3 S.H.
EDLM 9XXX	Collegial Supervision in an Era of Accountability (100-hour field experience).....	3 S.H.
EDLM 8XXX	Instructional and Curriculum Leadership and Evaluation (25-hour field experience)	3 S.H.
EDLM 8014	Sheltered English Immersion: Closing the Achievement Gap through Leadership (25-hour field experience).....	3 S.H.
EDLM 9100	Dynamics of Planned Change (100-hour field experience).....	3 S.H.
ETEC 9200	Project in Education Technology and Management Information Systems.....	3 S.H.
EDLM 8XXX	Law, Ethics, and Policies for the Educator (5 field experience hours)	3 S.H.

Practicum/Internship.....	6 S.H.
EDLM 9300	Practicum/Internship Principal PreK-6 OR
EDLM 9310	Practicum/Internship Principal 5-8 OR
EDLM 9320	Practicum/Internship Principal 9-12 (300 field experience hours)
Total for Degree	42 S.H.

Option B—Supervisor/Director (PreK-12) Licensure

Required Courses

EDLM 9005	Dynamic Perspectives in Education (5-hour field experience).....	3 S.H.
EDLM 8XXX	Principles for Success for Effective Administrators (20-hour field experience).....	3 S.H.
EDLM 8XXX	Data Informed Decision Making for School Improvement and Student Learning (20-hour field experience)....	3 S.H.
EDLM 8050	Seminar: Research in Educational Leadership	3 S.H.
EDLM 8XXX	Family and Community Engagement (15-hour field experience)	3 S.H.
EDLM 8XXX	Public School Finance, Human Resources, and Personnel Administration (10-hour field experience)	3 S.H.
EDLM 9XXX	Collegial Supervision in an Era of Accountability (100-hour field experience).....	3 S.H.
EDLM 8XXX	Instructional and Curriculum Leadership and Evaluation (25-hour field experience)	3 S.H.
EDLM 8014	Sheltered English Immersion: Closing the Achievement Gap through Leadership (25-hour field experience).....	3 S.H.
EDLM 9100	Dynamics of Planned Change (100-hour field experience).....	3 S.H.
ETEC 9200	Project in Education Technology and Management Information Systems.....	3 S.H.
EDLM 8XXX	Law, Ethics, and Policies for the Educator (5 field experience hours)	3 S.H.
EDLM 9100	Practicum/Internship.....	3 S.H.
	Supervisor/Director P-12 (100 field experience hours)	
Total for Degree.....		39 S.H.

RESOURCES

Advising

gceadvisor@fitchburgstate.edu
fitchburgstate.edu/gce/virtualadvisor

View our courses and programs

fitchburgstate.edu/courses
fitchburgstate.edu/gdprograms

Admissions requirements

fitchburgstate.edu/requirements

Non-Licensure Candidates

Students who do not wish to pursue licensure may take the core courses in either track plus three semester hours of electives and an Action Research course for a total of 39 semester hours. Applicants to the non-licensure track do not need to submit scores from the Massachusetts Tests for Educator Licensure (MTEL).

Revised 4/14